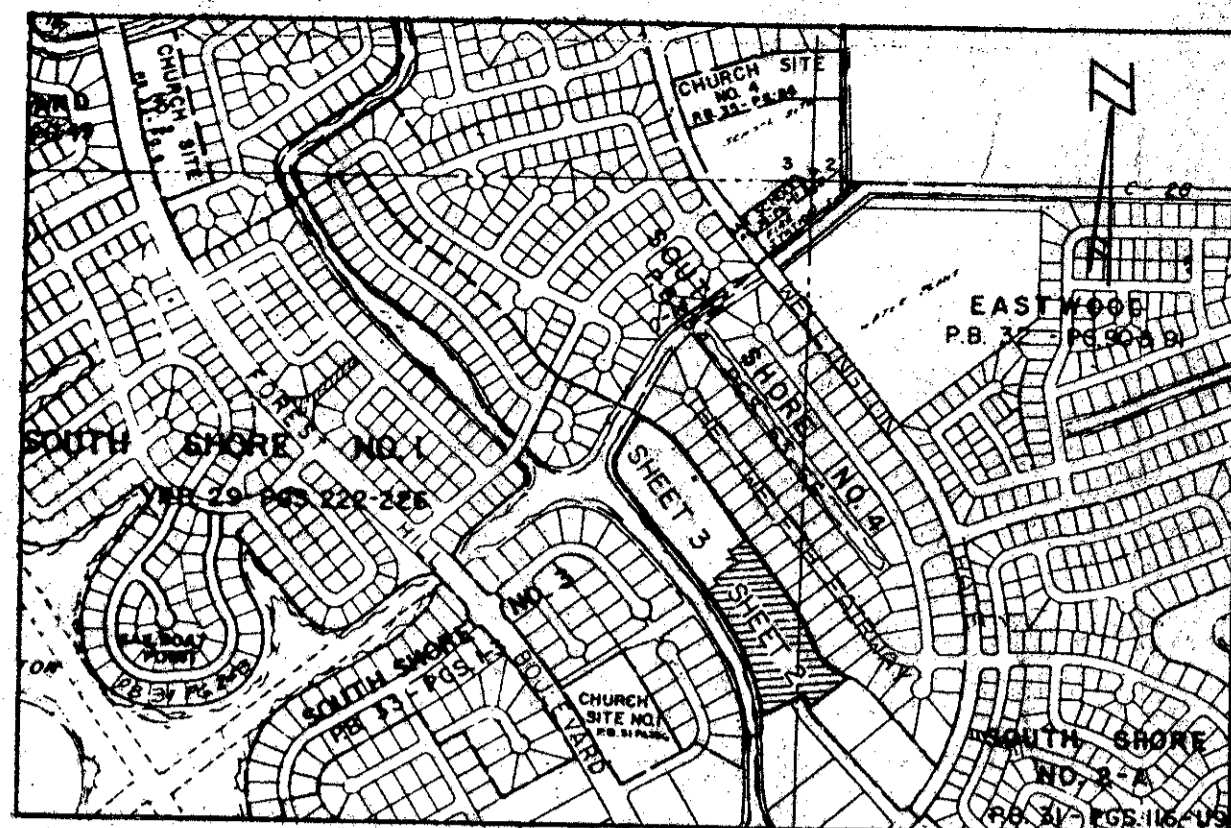
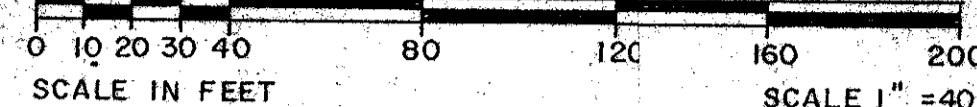


WATERWAY COVE OF WELLINGTON - P.U.D.

A REPLAT OF PARCEL C AND A PORTION OF ACME IMPROVEMENT DISTRICT CANAL RIGHT OF WAY OF SOUTH SHORE NO. 3 OF WELLINGTON - P.U.D. PER PLAT BOOK 33, PAGES 1, 2 AND 3 IN SECTIONS 10 AND 11, T.W. 44 S., RGE. 41 E. PALM BEACH COUNTY, FLORIDA.

SHEET 2 OF 3 SHEETS
DECEMBER 87



INDEX MAP

SOUTH SHORE NO. 3 OF WELLINGTON - P.U.D.
P.B. 33 PGS. 1-3

TRACT "A" THE FRENCH QUARTER
P.B. 37 PGS. 127-128

LIMITS OF PLAT

ACME IMPROVEMENT DISTRICT R/W

LIMITS OF PLAT

100'



SEE DETAIL "A"
SHOWN ON SHEET 3 OF 3
WESTERLY LINE OF PARCEL C OF
SOUTH SHORE No. 3 OF WELLINGTON - P.U.D.
P.B. 33, PGS. 1-3

NOTE:
ACME IMPROVEMENT DISTRICT SHALL HAVE THE RIGHT TO
CONSTRUCT AND MAINTAIN WATER AND SEWER FACILITIES WITHIN
UTILITY EASEMENTS AND ROAD TRACTS AS SHOWN HEREON.

ADD. BY
CHECKED BY

0332-064

60/117

SCALE 1" = 40'	WICK MILLER, INC. Land Surveying Planning & Development Consultants	DRAWN BY CWR
DATE DEC. 1987		
WATERWAY COVE		DRAWING NUMBER 87-0048
2560 RFA Blvd. • Suite 100 Palm Beach Gardens, Florida 33410 (561) 621-5200		

SOUTH SHORE NO. 4 WELLINGTON - P.U.D.
P.B. 34, PGS. 1-66

HEMPSTEAD STREET